

# PRIZM™ LENS TECHNOLOGY

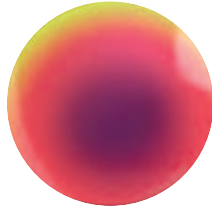


Oakley Prizm™ lens technology has turned eyewear into vital equipment for sports. It all comes down to enhancing detail in the most precise ways to optimize your visual experience, and the result is game-changing performance.

We analyze the demands of each sport and environment to ensure each lens transmits the right wavelengths. That way, you can experience sharpened visual acuity that helps you see everything more clearly, and react more quickly. Beyond enhanced detail recognition that helps you spot what you need to see, Prizm Sport lenses improve your ability to see and track moving objects in your periphery. Whatever the sport, you'll have improved performance to help you compete with confidence.

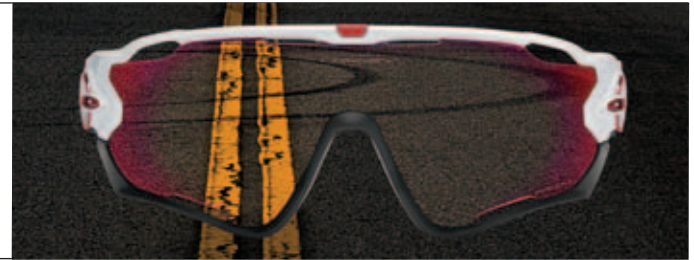
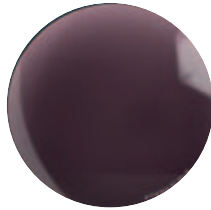
## PRIZM™ ROAD\*

Engineered to help you see subtle changes in road texture and quickly spot hazards like rocks and potholes so you can perform with confidence.



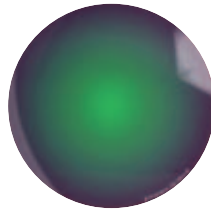
## PRIZM™ ROAD BLACK

Engineered to help you see subtle changes in road texture and quickly spot hazards like rocks and potholes so you can perform with confidence on bright, sunny days.



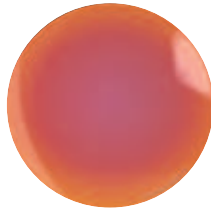
## PRIZM™ ROAD JADE

Engineered to help you see subtle changes in road texture and quickly spot hazards like rocks and potholes so you can perform with confidence on bright, sunny days.



## PRIZM™ TRAIL TORCH

Engineered to help you spot transitions and textures between types of dirt and distinguish obstacles in a variety of light conditions so you can ride with confidence.



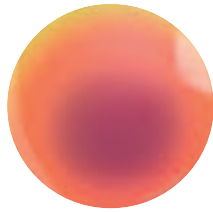
## PRIZM™ LOW LIGHT

Engineered to help optimize detail recognition in low light conditions and artificial light environments without causing a color shift in your vision.



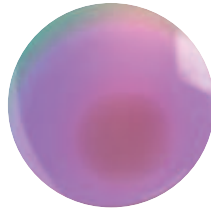
## PRIZM™ FIELD\*

Engineered to enhance contrast and help you easily track the ball against the sky, grass and dirt.



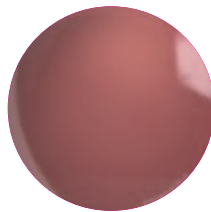
## PRIZM™ GOLF\*

Engineered to help you spot transitions between the fairway, fringe, and rough and gauge distance with accuracy to help you read the course better.



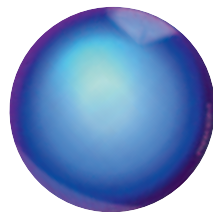
## PRIZM™ DARK GOLF

Engineered to help you spot transitions between the fairway, fringe, and rough and gauge distance with accuracy to help you read the course better in bright, sunny days.



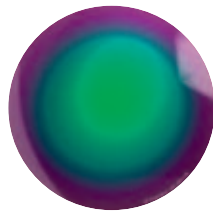
## PRIZM™ DEEP WATER

Engineered to help you see what's under the surface by boosting colors that water absorbs and cutting through glare.



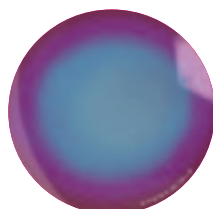
## PRIZM™ SHALLOW WATER

Engineered to help you identify structure and drop offs, and cut through glare in freshwater environments.



## PRIZM™ SNOW

Engineered to help you see snow contours, bumps and textures in a variety of light and snow conditions.



# PRIZM™ LENS TECHNOLOGY



Oakley Prizm™ lenses fine tune individual colors, enhancing detail for an optimized experience. With ordinary sunglass lenses, the world looks dull and flat, but Prizm lens technology makes everything look vivid and vibrant. It's a breakthrough that comes from decades of research in optics for professional athletes, and it helps you make the most of everything from sports to everyday life.



## GREY BASE

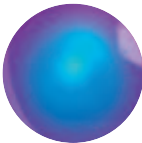
\*Also available in non-polarized



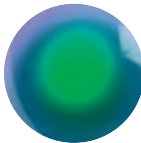
PRIZM™ BLACK POLARIZED\*



PRIZM™ GREY POLARIZED\*



PRIZM™ SAPPHIRE POLARIZED\*



PRIZM™ JADE POLARIZED\*



Some of our most popular lens colors are now available in Prizm. We chose our top sellers, including rich hues of Iridium® such as Black, Tungsten, Ruby, Sapphire, Jade and 24K. Customers who prefer a non-mirrored look can choose Prizm Grey or Prizm Bronze, which do not have Iridium coating. Each of these Prizm lens colors are available with HDPolarized™ technology to cut glare.



## BRONZE BASE

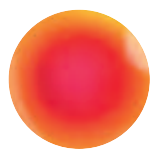
\*Also available in non-polarized



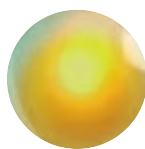
PRIZM™ BRONZE POLARIZED\*



PRIZM™ TUNGSTEN POLARIZED\*



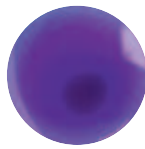
PRIZM™ RUBY POLARIZED\*



PRIZM™ 24K POLARIZED\*



PRIZM™ ROSE GOLD POLARIZED\*



PRIZM™ VIOLET POLARIZED\*